

Indian J Ophthalmol. 2008 Jan-Feb;
56(1): 45–50.

- A lot of this 'hi-tech' explosion involves diagnostic tests. Regrettably, there is sometimes a tendency to use tests just because they are available; or because they are hi-tech.

Figure 1 The manner in which positive predictive value, negative predictive value, specificity and sensitivity relate to a test outcome and an established gold standard (true positive and true negative)

		Condition (as determined by “gold standard”)		
		Condition positive	Condition negative	
Test outcome	Test outcome positive	True positive	False positive (Type I error)	Positive predictive value = $\frac{\Sigma \text{ True positive}}{\Sigma \text{ Test outcome positive}}$
	Test outcome negative	False negative (Type II error)	True negative	Negative predictive value = $\frac{\Sigma \text{ True negative}}{\Sigma \text{ Test outcome negative}}$
		Sensitivity = $\frac{\Sigma \text{ True positive}}{\Sigma \text{ Condition positive}}$	Specificity = $\frac{\Sigma \text{ True negative}}{\Sigma \text{ Condition negative}}$	

Lo, D. J. *et al.* (2014) Biomarkers for kidney transplant rejection
Nat. Rev. Nephrol. doi:10.1038/nrneph.2013.281





**Explore
it**

**Support
it**

**Plan
it**

**Do
it**

**About
us**

**Work
with us**

[Home](#) » [Explore it](#) » Why is it important?

[What is public engagement?](#)

[Who are the public?](#)

▼ [Why is it important?](#)

- [Benefits of engagement](#)
- [Business case for engagement](#)
- [A changing world](#)

[What are the policy drivers?](#)

[The engaged university](#)

[Culture change](#)

[How we can help](#)

Why is it important?

Share this page!



Related information

▸ Funding schemes

▸ Funded projects

▸ Application information

▸ Science Writing Prize

▸ Screenwriting Fellowship

▸ Engagement with your research

SEE ALSO

[Contacts](#)

Public engagement

We aim to support innovative projects that allow people to consider, question and debate the key issues raised by research connected to health and the human condition.

Public Engagement funding

Each year we offer up to £10 million through our wide-ranging Engaging Science grants programme to support projects that encourage people from all ages and from all walks of life to be informed, inspired and involved. Whether you work in science, the arts, media or education, we want to hear your ideas for projects that build excitement and interest around science and society. We support projects in many different areas, including film-making, theatre productions, exhibitions, discussion and policy-influencing events and multimedia.

Download our information document for grantholders, [Grant Expectations](#).

Engagement with your research

We expect our major research groups to engage with the public about their work, and therefore offer training, funding, opportunities and advice. We also work with other research funders, universities and research institutes to foster a research culture in which public engagement is valued, recognised and supported.

Broadcast, Games and Film

Our Broadcast, Games and Film team work with the entertainment industry to support fresh approaches and original ideas inspired by science and its impact on society. We share ideas, facilitate access to experts and offer funding for development and production.

Large scale initiatives and success of public engagement

SUPPORT FOR RESEARCHERS

How to engage the public with your research



GRANTS AWARDED

See the grants we have awarded and our funding statistics



WATCH OUR SHOWREEL

See some of the exciting initiatives, work and projects we fund



The University of Glasgow uses cookies for analytics and advertising. Find out more about our [Privacy policy](#).

close



News

Become a STEM
Ambassador

Ambassador Opportunities

Teacher Information

STEM Resources

Science Connects Bulletin
2015/16

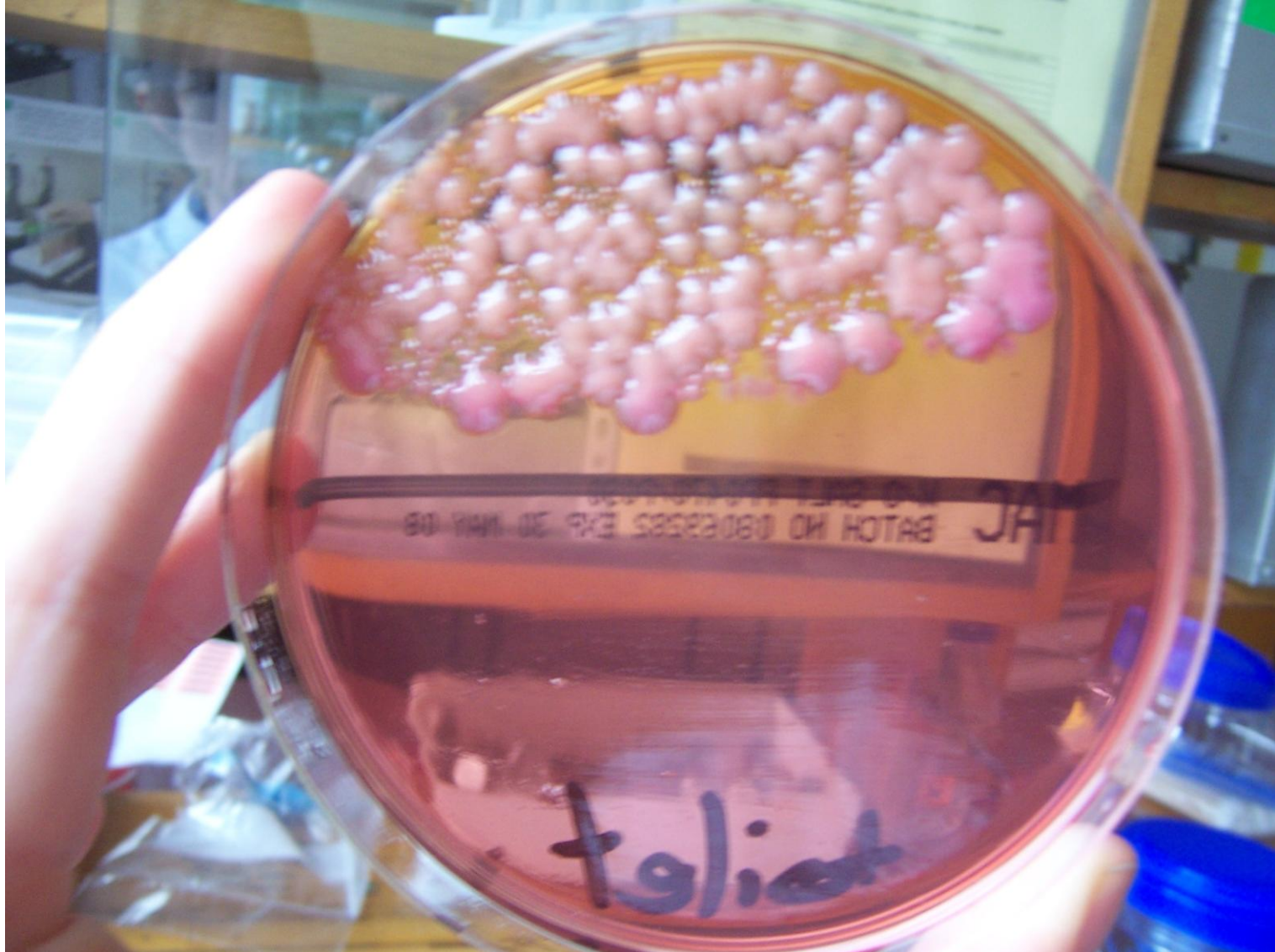
Contact us

Connecting schools to the world of science, technology, engineering and maths

Science Connects holds the STEMNET contract for the management and co-ordination of the STEM Ambassador Programme in the West of Scotland. Science Connects also offers schools the STEM Advisory Network Service for information and advice on STEM (Science, Technology, Engineering and Maths) related enhancement and enrichment activities to inspire pupils in the STEM subjects.



What lurks in the school toilet?





WANTED !!!

Science

Thief

**Do not approach – could
be carrying dangerous
secrets**

**Reward to information
leading to arrest**

Bugs on the Runs

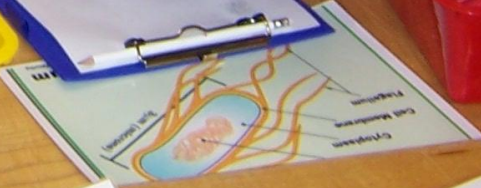
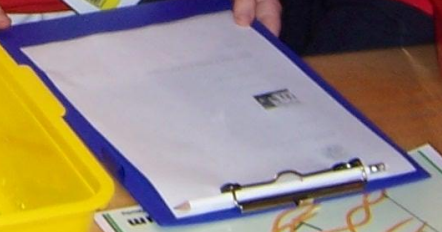




Student 1: A young boy with short brown hair, wearing a black V-neck sweater over a white collared shirt. He is smiling and looking down at a blue clipboard he is holding. He has a white lanyard with a badge around his neck.

Student 2: A young boy with short brown hair, wearing a red V-neck sweater over a white collared shirt. He is smiling and looking towards the other students. He has a white lanyard with a badge around his neck.

Student 3: A young boy with short dark hair, wearing a red V-neck sweater over a white collared shirt. He is looking down at a blue clipboard he is holding. He has a white lanyard with a badge around his neck.









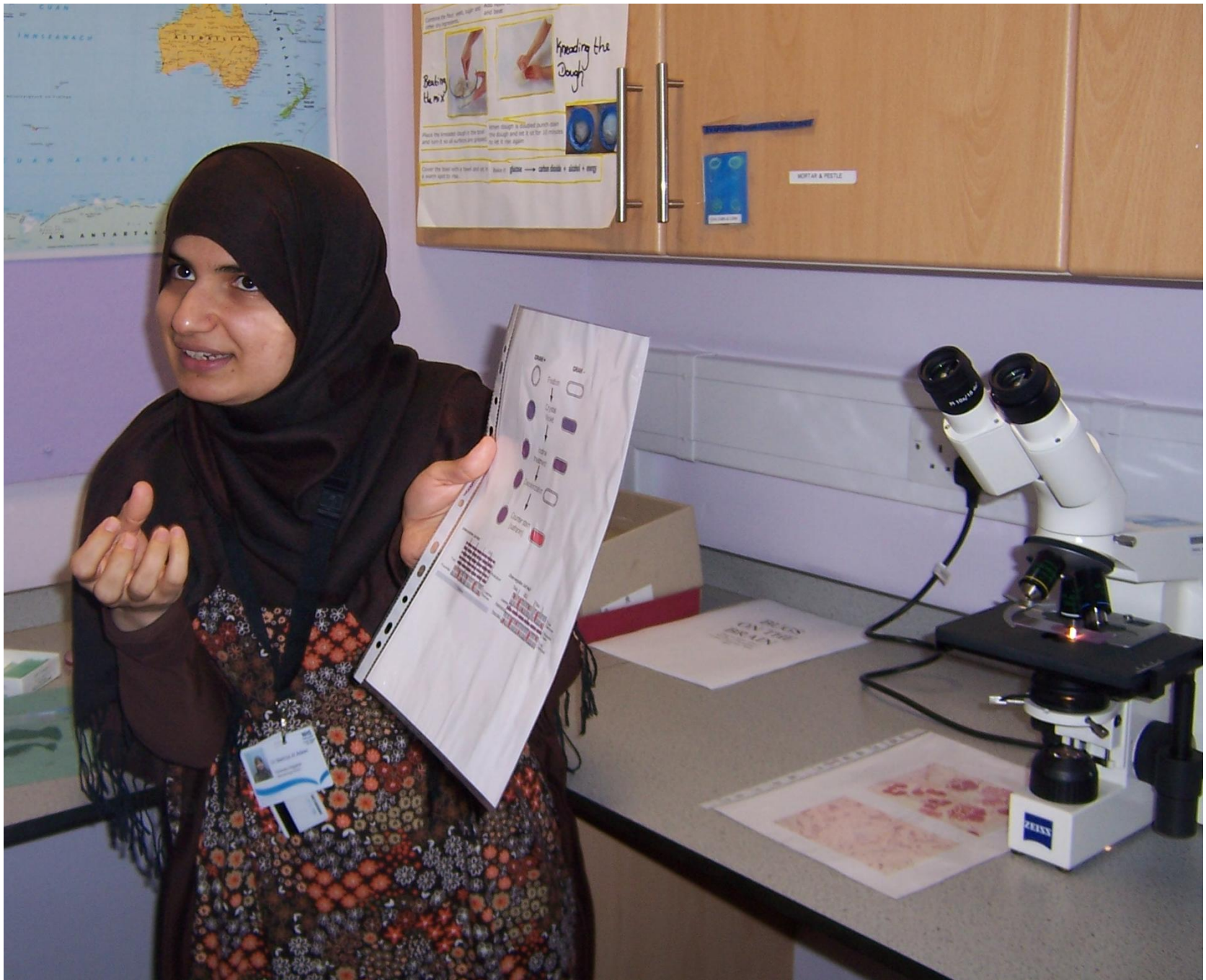
Bugs on the Brain















NCBI/ BLAST/ blastn suite

blastn blastp blastx tblastn tblastx

BLASTN programs search nucleotide databases using a nucleotide query. [more...](#)

Enter Query Sequence

Enter accession number(s), gi(s), or FASTA sequence(s)

Clear

Query subrange

aaaaaaaaagctctttttcagcctaaaaaagttttttcaagattcaatggttgacaacatctccatt

From

To

Or, upload file

Browse...

Job Title

Enter a descriptive title for your BLAST search

Align two or more sequences

Choose Search Set

Database

Human genomic + transcript Mouse genomic + transcript Others (nr etc.):

Nucleotide collection (nr/nt)

Organism

Optional

Enter organism name or id-completions will be suggested Exclude

Enter organism common name, binomial, or tax id. Only 20 top taxa will be shown.

Exclude

Optional

Models (XM/XP) Uncultured/environmental sample sequences

Entrez Query

Optional

Enter an Entrez query to limit search

Program Selection

Optimize for

- Highly similar sequences (megablast)
More dissimilar sequences (discontiguous megablast)
Somewhat similar sequences (blastn)

Choose a BLAST algorithm

BLAST

Search database Nucleotide collection (nr/nt) using Megablast (Optimize for highly similar sequences)

Show results in a new window

Algorithm parameters

Note: Parameter values that differ from the default are highlighted in yellow and marked with diamond sign

Science4survival























Disney PReSEnts
**Toy
STORY
3**
June 18, 2010
More fun than ever

READY FOR EMERGENCIES?

▶ [Ready for emergencies home](#) ▶ [Pandemic flu](#)

HOME

ABOUT THIS RESOURCE

SEVERE WEATHER

FLOODING

TERRORISM

PANDEMIC FLU

▶ RESOURCES

ANIMAL DISEASE
OUTBREAK

UTILITIES FAILURE

RESOURCES

PANDEMIC FLU

The ability to respond quickly and effectively to public health issues is a key priority in a modern country, and it is important that young people know how they can contribute.

In the past, pandemic flu outbreaks have had a considerable global impact with far-reaching social and economic consequences. The ability to prepare for such events is essential to limit their impact and create a resilient community.

Watch a report from the BBC about winter flu, including news about a 32-year-old woman who died following complications from catching swine flu.



RESOURCES

[PANDEMIC FLU - LEARNING JOURNEY](#)

Find out about measures that should be taken when dealing with a flu outbreak.

[SWINE FLU - LEARNING JOURNEY](#)

This learning journey looks at the impact of the 2009 swine flu pandemic.

Peters Piot



- 1976 Nuns in Ziere died
- Blood samples sent to Belgium





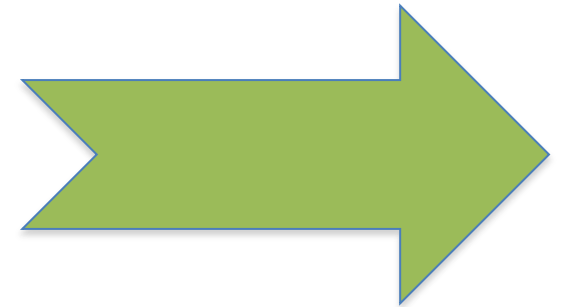
HOW TO TREAT THE COMMON COLD

With Dr. Christie, Clinical Microbiologist, Bsc, MBChB, DTM&H, FRCPath, Scotland, UK





MICROBIOLOGY OPEN DAY 20th NOVEMBER





Infection prevention and control

'It's everyone's
business'







